

# Turbo Key

# Super

In 1988, when we started drip irrigation, after careful study of Indian agriculture, we introduced the "Jain Turbo Key" dripper. Since then it is the most popular and widely used dripper in India. So much so that "Jain Turbo Key" became the identity of drip irrigation and paved the way for the success of drip irrigation in India.

Its unique design, construction, easy to open, clean and close feature, and unmatched performance made it the favorite and first choice of farmers.

We now present '**Turbo Key Super**' dripper. Designed with added features to achieve unmatched performance ensures **More Crop Per Drop**.<sup>®</sup>



## This is what makes it is a Superior Choice!



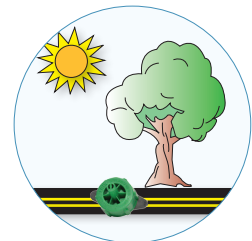
Reliable, Consistent, Long lasting and Proven dripper since 30+ years.



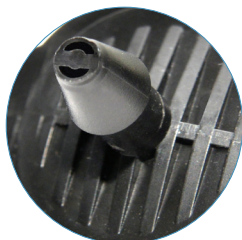
Jain Turbo Key Super uses innovative labyrinth which ensures clog free performance.



Best CV in the category of openable drippers. Unmatched performance in the industry.



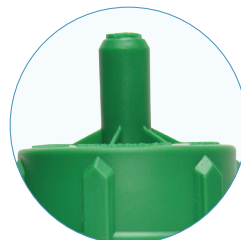
Made of engineering polymer to withstand adverse conditions including harsh weather & resistance to chemical and fertilizers.



Each dripper has an inlet filter that prevents entry of large particles. Its ribbed base makes it robust & durable.



Unique outlet design to prevent spurting of water flow.



Raised outlet facilitates connection of extension tubing and also prevents direct entry of bugs into the dripper.



Dripper construction allows easy to open, clean and re-close.



More Crop Per Drop<sup>®</sup>



# Turbo Key Super – Best Value for your Money

## Operating Specifications

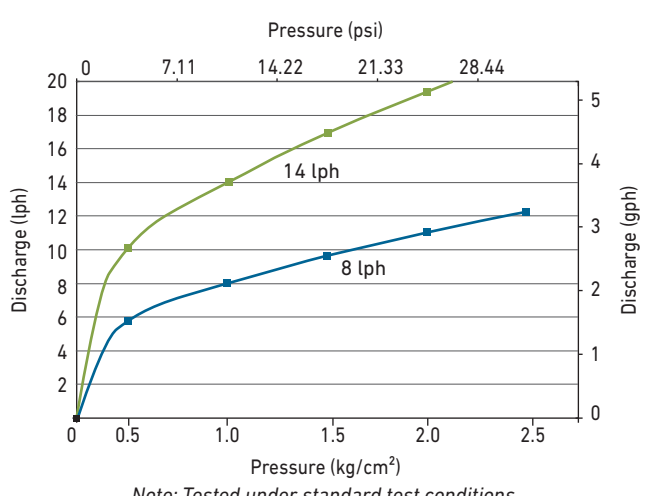
- Nominal operating pressure 1 kg/cm<sup>2</sup>.
- Always use 'Turbo Key Super Spanner' to open and close the dripper. Close the dripper properly.
- Filtration recommendation 100 micron or less. Actual quality of filtration can be decided by quality of source water.

## Specifications

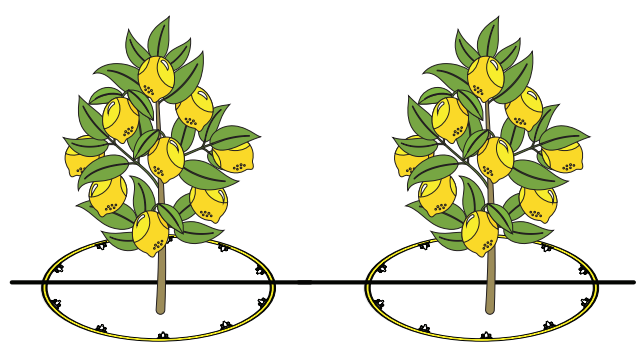
*Discharge		Color of cap & insert	Emitter exponent (x)	Flow coefficient (k)	Coeff. of mfg. variation, CVm
lph	gph				
8.0	2.11	Blue	0.48	8.0	3
14.0	3.70	Green	0.48	14.0	3

- \* At an operating pressure of 1 kg/cm<sup>2</sup> (14.2 psi).
- Flow equation  $q = kH^x$ ,  $q$ = discharge, lph,  $H$ = Pressure Head, kg/cm<sup>2</sup>,  $k$  = flow coefficient,  $x$  = Emitter exponent.
- Recommended punch size - 2.9 mm

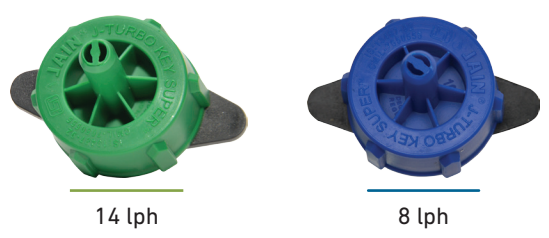
## Performance Graph



Note: Tested under standard test conditions.



Loop type installation using Turbo Key Super



Tel: +91-257-2258011; Fax: +91-257-2258111; E-mail: jisl@jains.com; Website: www.jains.com; Toll Free: 1800 599 5000

